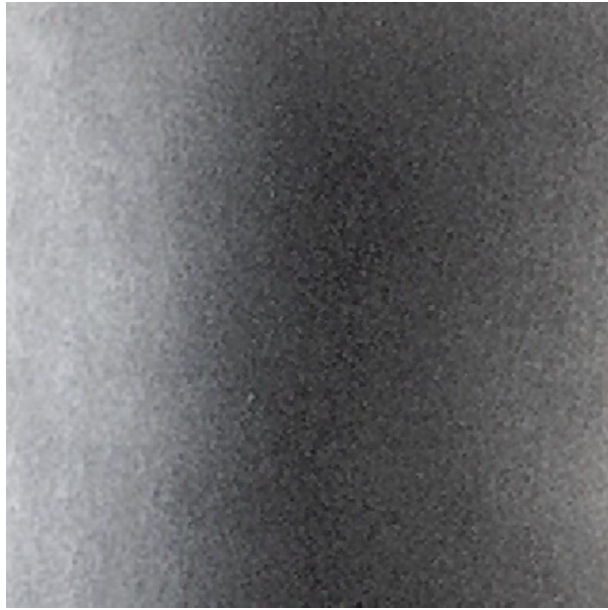


Casamilano

Silvergrey



Handmade craftsmanship finishing, applicable to wood and metal. Brushing and coating are performed by highly qualified local artisans. Do not expose to weather or direct sources of lighting (spotlights, light). Avoid direct contact with metal or sharp items, that may cause scratches. To clean it, use a soft cloth, lightly moistened and dry. Do not use chemicals, solvents, abrasives and products for cleaning and polishing of wood, alcohol, thinners, acetone (please refer to product chart). The colours on the screen, for well known technical reasons, are indicative only and may differ from the actual finish.

Colour Variations