

# Casamilano

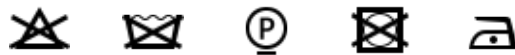
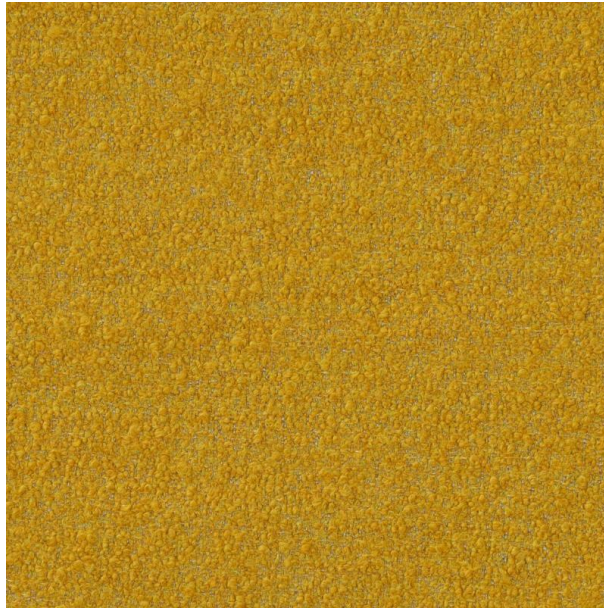
Ricciolone/5/1

Color: Safran

Tirella: Ricciolone

Category: Cat D

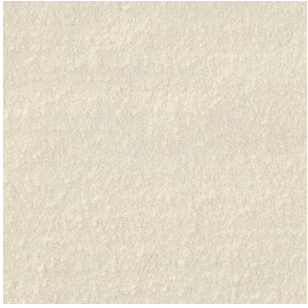
Fireproof



<p class="MsoNormal"><span style="line-height: 14.98px;">56% PC Acrylic, 15% PL Polyester, 12% VI Viscose, 11% COCotton, 6% LI Linen – H. cm 140 ± - 924 gr/ml - Xenotest 4 / 5 – Martindale 30.000 –Ignifugazione / Flammability California TB117-2013 / C&M BS5852.1.1979 /C&M EN1021.1.2 / NFPA 260:2019<o:p style="line-height: 14.98px;"></o:p></span>

<p class="MsoNormal"><span lang="EN-GB" style="line-height: 14.98px;">This fabric is yarn-dyed. Possible irregularities of the yarn must be considered as a feature of the product because it's a natural yarn. Batch to batch chromatic variations must be considered as normal and are to be evaluated with the usual tolerance of this type of fabric. Work separately different delivery lots. Spotstaining with spray detergent dry cleaning. </span>The colours on the screen, for well known technical reasons, are indicative only and may differ from the actual finish.

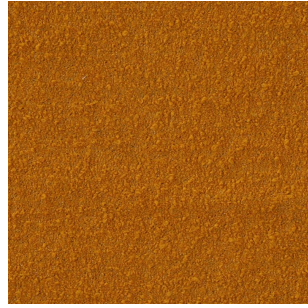
# Colour Variations



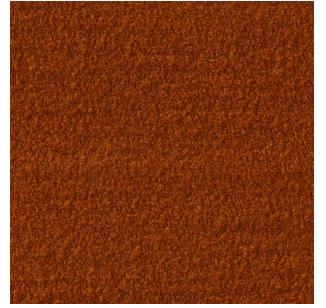
Ricciolone/1



Ricciolone/1/1



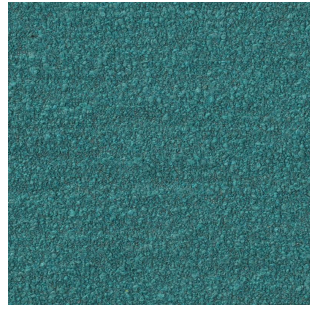
Ricciolone/20/1



Ricciolone/39



Ricciolone/7



Ricciolone/2